



# GREAT ARTISTS PICTURE STUDY

*Compiled and arranged by Barbara Ferrell*

# Sample



REMBRANDT, LINNAEUS, GAINSBOROUGH,  
DEGAS, MONET, MORISOT, VAN GOGH

# Great Artists Picture Study Packet

This picture study packet provides artwork to study the following artists:

- Rembrandt
- Linnaeus
- Gainsborough
- Degas
- Monet
- Morisot
- Van Gogh

For art projects that may be used in conjunction with these picture studies, visit [the Great Artists section](#) of our website.

---

© 2019 Brandy Ferrell • Half-a-Hundred Acre Wood, LLC  
All rights reserved.

No part of this publication may be reproduced or transmitted in any form or by any means - electronic, mechanical, recording, or any other - including photocopying or storage or transmission through any information or retrieval system such as the World Wide Web or email, without written permission from the author, except as follows:

- The purchaser of this ebook is granted permission to print copies for immediate family use.
- The purchaser of this ebook is granted permission to print a display copy for a classroom or co-op setting.

Purchaser is not granted permission to print and/or distribute this work to others. To use this document for any other purpose, please contact [support@halfahundredacrewood.com](mailto:support@halfahundredacrewood.com).

All artwork is in the public domain. Note: The Linnaeus artwork includes a portrait of Linnaeus along with images from his books *Systema Naturae* and *Species Plantarum*. These are the only illustrations solely attributed to Linnaeus. On subsequent pages for Linnaeus, public-domain botanical illustrations from various artists are provided for examples of how to draw a botanical illustration. These are not Linnaeus images, but they are better examples of botanical illustrations for the purpose of taking students through this exercise.

Published in the USA by Half-a-Hundred Acre Wood, LLC  
P.O. Box 20 • Riddleton, TN 37151

Visit our website! [www.halfahundredacrewood.com](http://www.halfahundredacrewood.com)



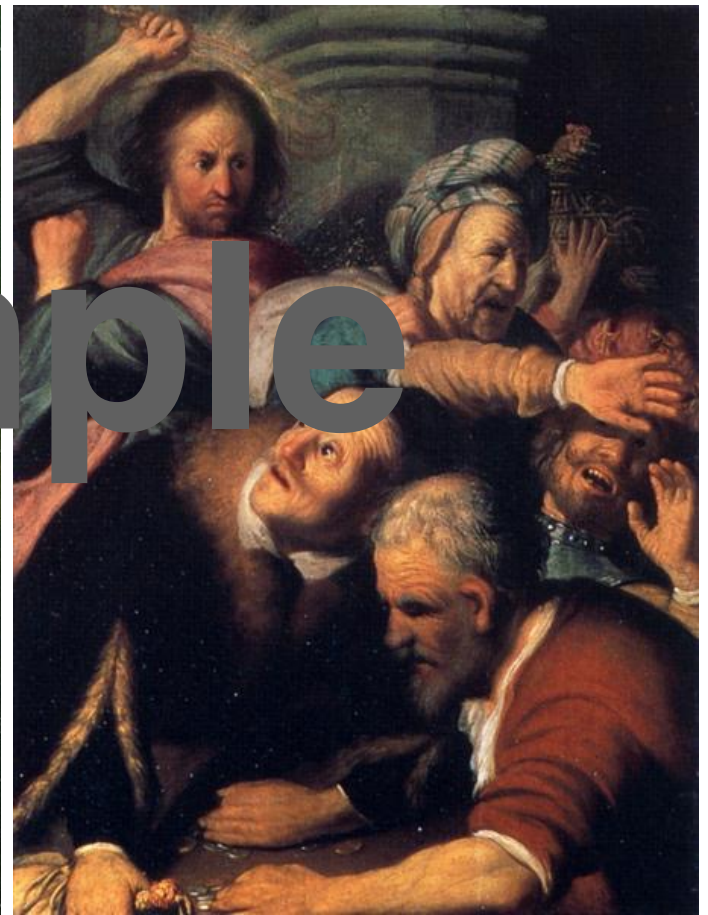
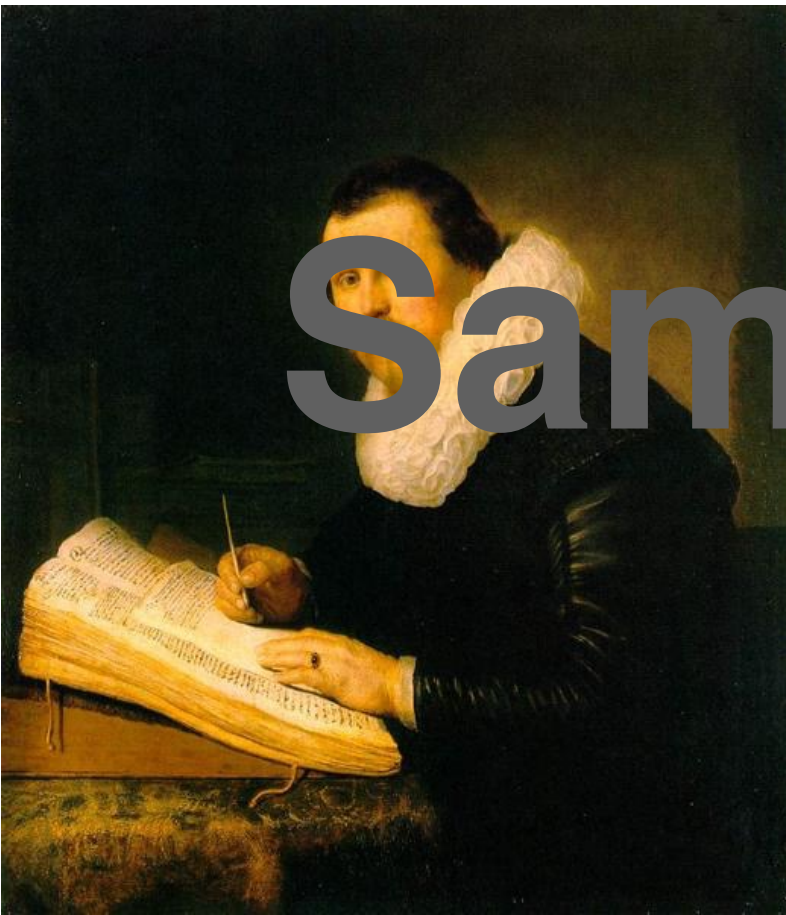
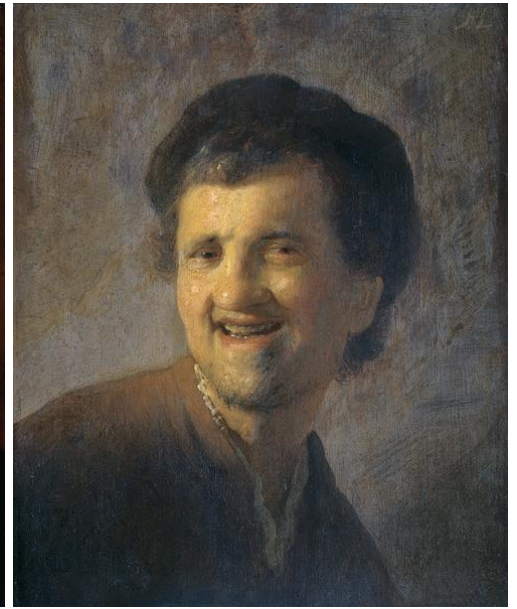
# Rembrandt

## FACIAL EXPRESSIONS

Considered one of the greatest painters of all time, Rembrandt Harmensz van Rijn was a Dutch painter who lived in the 1600s. He practiced making drawings of himself with different facial expressions and painted expressive emotions on the faces of his subjects.







# Rembrandt (1606 - 1669)

## MORE FACIAL EXPRESSIONS

Considered one of the greatest painters of all time, Rembrandt Harmensz van Rijn was a Dutch painter who lived in the 1600s. He practiced making drawings of himself with different facial expressions and painted expressive emotions on the faces of his subjects.







# Gainsborough (1727-1788)

## PORTRAITS ON LANDSCAPE

Thomas Gainsborough was a famous portrait painter in England. He painted portraits with fanciful landscapes in the background. He often painted landscapes at night by candlelight, using a model composed of stones, mirror pieces, broccoli, and other items.





